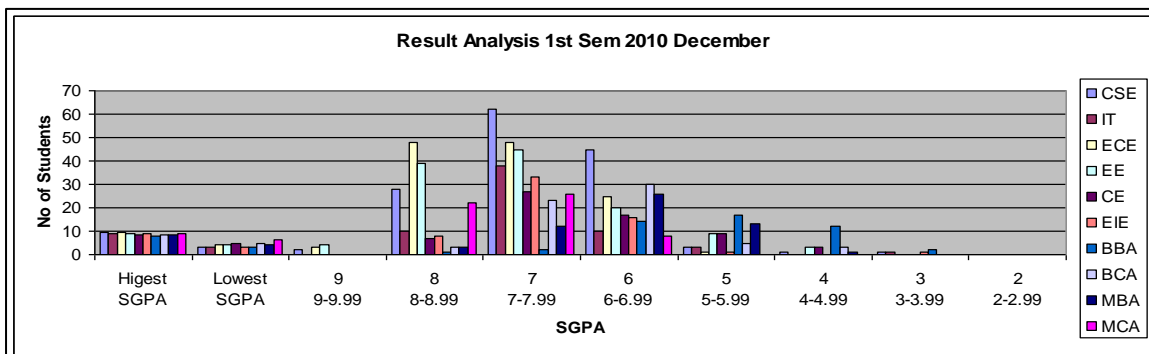


Published on 04.02.2011

Narula Institute Of Technology

Result Analysis - 1st Sem (2010 DECEMBER)

DEPT	Highest SGPA	9 9-9.99	8 8-8.99	7 7-7.99	6 6-6.99	5 5-5.99	4 4-4.99	3 3-3.99
CSE	9.22	2	28	62	45	3	1	1
IT	8.89	0	10	38	10	3	0	1
ECE	9.44	3	48	48	25	1	0	0
EE	9.07	4	39	45	20	9	3	0
CE	8.52	0	7	27	17	9	3	0
EIE	8.85	0	8	33	16	1	0	1
BBA	8	0	1	2	14	17	12	2
BCA	8.43	0	3	23	30	5	3	0
MBA	8.25	0	3	12	26	13	1	0
MCA	8.9	0	22	26	8	0	0	0
TOTAL		9	169	316	211	61	23	5



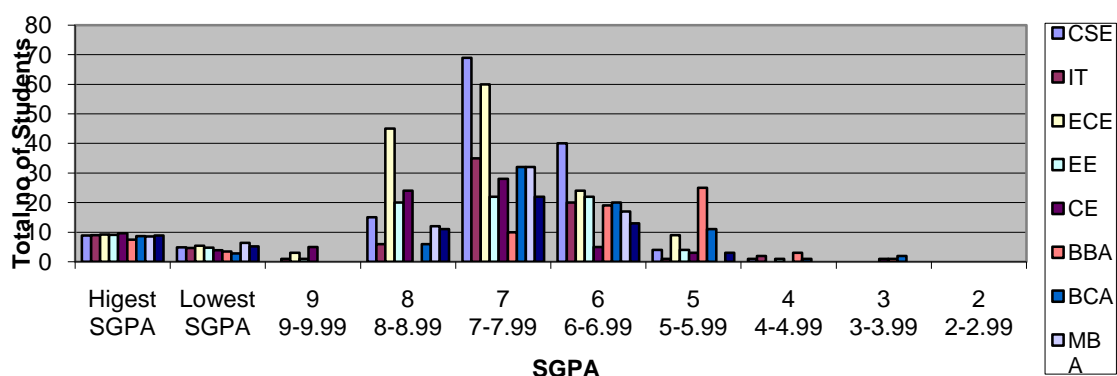
Published on 04.02.2011

Narula Institute Of Technology

Result Analysis - 3rd Sem (2010 DECEMBER)

DEPT	Highest SGPA	9 9-9.99	8 8-8.99	7 7-7.99	6 6-6.99	5 5-5.99	4 4-4.99	3 3-3.99
CSE	8.83	0	15	69	40	4	1	0
IT	9.03	1	6	35	20	1	2	0
ECE	9.2	3	45	60	24	9	0	0
EE	9.07	1	20	22	22	4	1	0
CE	9.64	5	24	28	5	3	0	1
BBA	7.5	0	0	10	19	25	3	1
BCA	8.71	0	6	32	20	11	1	2
MBA	8.5	0	12	32	17	0	0	0
MCA	8.9	0	11	22	13	3	0	0
TOTAL		10	139	310	180	60	8	3

Result Analysis 3rd sem 2010 december



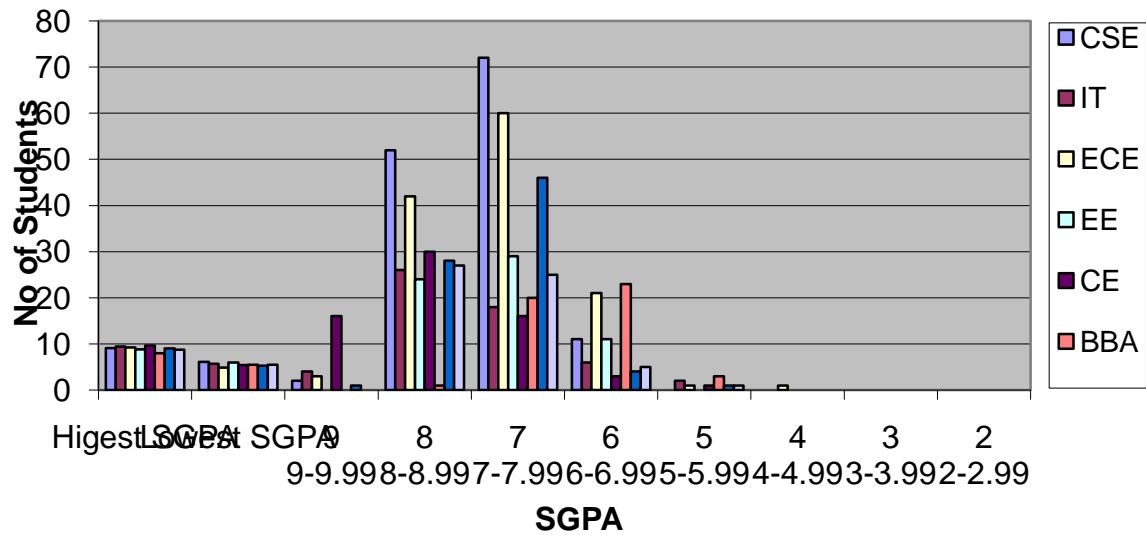
Published on 04.02.2011

Narula Institute Of Technology

Result Analysis - 5th Sem (2010 DECEMBER)

DEPT	Highest SGPA	9 9-9.99	8 8-8.99	7 7- 7.99	6 6-6.99	5 5-5.99	4 4-4.99	3 3-3.99
CSE	9.08	2	52	72	11	0	0	0
IT	9.46	4	26	18	6	2	0	0
ECE	9.23	3	42	60	21	1	1	0
EE	8.84	0	24	29	11	0	0	0
CE	9.64	16	30	16	3	1	0	0
BBA	8	0	1	20	23	3	0	0
BCA	9.03	1	28	46	4	1	0	0
MCA	8.77	0	27	25	5	1	0	0
TOTAL		54	230	286	84	9	1	#REF!

Result Analysis 5th Sem 2010 December



Published on 04.02.2011

Narula Institute Of Technology

Result Analysis - 7th Sem (2010 DECEMBER)

DEPT	Higest SGPA	9 9-9.99	8 8-8.99	7 7-	6 6-6.99	5 5-5.99	4 4-4.99	3 3-3.99
CSE	9.15	5	73	48	1	0	0	0
IT	9.27	7	48	6	0	0	0	0
ECE	9.15	8	40	16	0	0	0	0
EE	9.14	2	41	22	0	0	0	0
CE	9.75	22	32	5	0	0	0	0
TOTAL		44	234	97	1	0	#REF!	#REF!

Result Analysis 7th Sem 2010 December

